

Arizona Medical Marijuana Program March 2019 Monthly Report

In December 2010, Arizona voters passed the Arizona Medical Marijuana Act (AMMA), A.R.S. §36-2801 *et seq.* The AMMA went into effect on April 14, 2011, making Arizona the fourteenth state to adopt a medical marijuana law. The AMMA designates the Arizona Department of Health Services (ADHS) as the licensing and issuing authority for the Arizona Medical Marijuana Program.

The AMMA monthly report highlights the most current program statistics. This includes data on active medical marijuana cardholders as well as transaction data from the sale of medical marijuana at non-profit medical marijuana dispensaries. Tables 1 through 6 and Figures 1 through 3 reflect data that are point in time. Table 7 and Figure 4 are data from the month of March, 2019. The Year-To-Date section which follows shows cumulative applications and approvals for 2019. For further information and statistics, please reference the Arizona Medical Marijuana Annual Report.

Table 1. Arizona Medical Marijuana Active Qualifying Patients, Designated Caregivers and Dispensary Agents Profile

Active Cardholder's Profile	Totals	Percent Total
1. Qualifying patients (QPs)	193,672	96.75%
2. Caregivers (CGs)	802	0.40%
3. Dispensary Agents (DA)	5,705	2.85%
Total	200,179	100.00%

*Note: For caregivers and dispensary agents, these data reflect unique individuals, not the number of cards.

Table 2. Arizona Medical Marijuana Active Qualifying Patients Profile

Application profile of qualifying patients	Totals	Percent Total
1. New applications	112,038	57.85%
2. Renewal applications	73,941	38.18%
3. Changed demographics	3,235	1.67%
4. Added Caregivers	182	0.09%
5. Change Dup	4,246	2.19%
6. Replaced Caregivers	28	0.01%
7. Removed Caregivers	2	0.00%
Total	193,672	100.00%

Approximately 11 percent (n = 21,414) of the active cardholders were determined to be SNAP eligible. Of the 21,414 that were determined to be eligible, 11,019 (~51%) were females and 10,395 (~49%) were males.

Table 3. Arizona Medical Marijuana Active Qualifying Patients Characteristics

Characteristics of Active Cardholders who are Qualified Patients	Totals (N =193,672)	Percent Total
Patient Age-groups		
Less than 18 years	187	0.10%
18 to 30 years	46,730	24.13%
31 to 40 years	40,464	20.89%
41 to 50 years	30,734	15.87%
51 to 60 years	30,967	15.99%
61 to 70 years	31,658	16.35%
71 to 80 years	10,871	5.61%
81 and older	2,061	1.06%
Patient Gender		
Male	114,998	59.38%
Female	78,674	40.62%

**Figure 1. Arizona Medical Marijuana Active Qualifying Patients Characteristics by Gender and Age
(N = 193,672)**

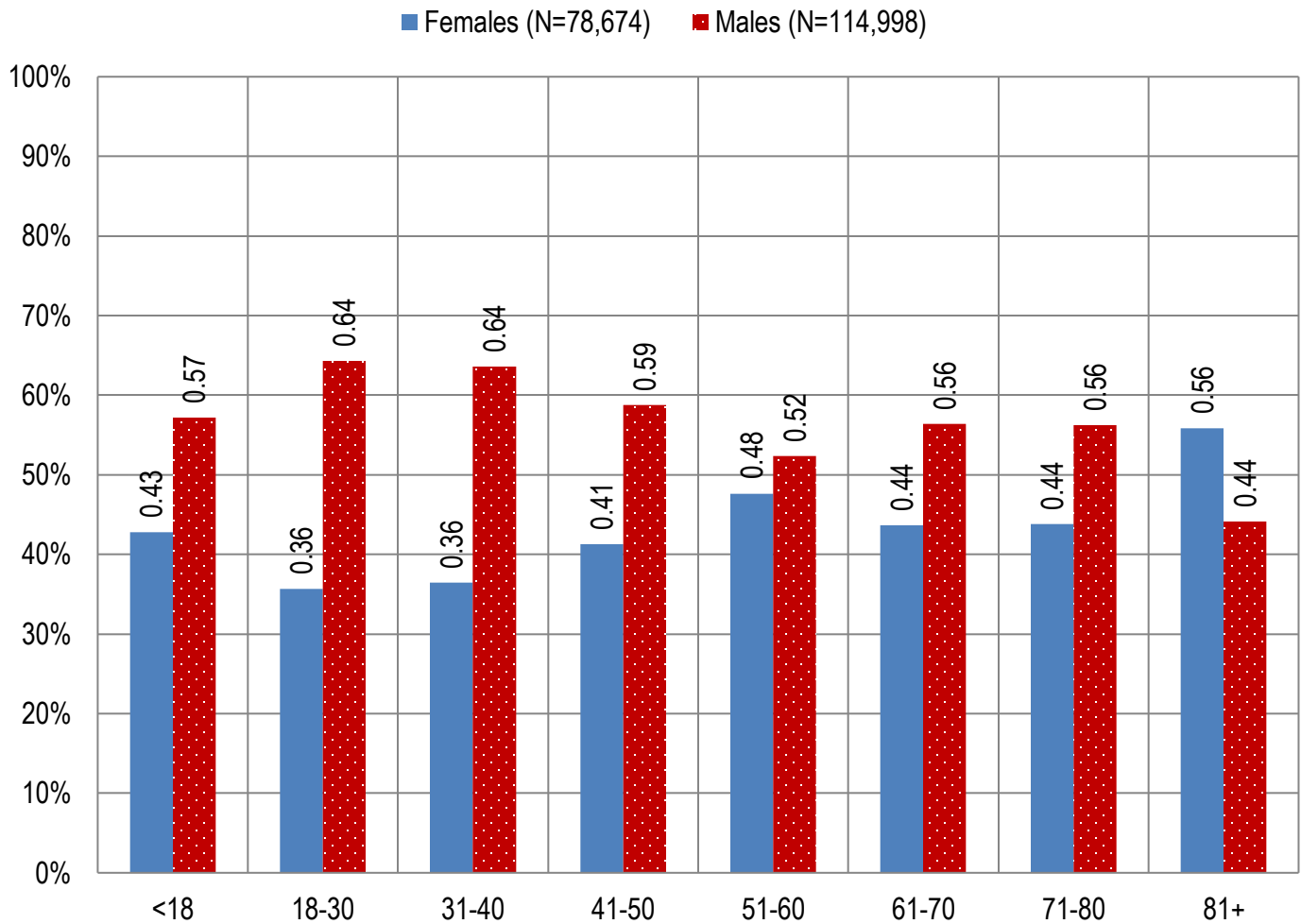


Table 4. Arizona Medical Marijuana Active Qualifying Patients Medical Condition Profile

Patient medical condition profile of Active Cardholders [¶]	Totals	Percent Total
Alzheimer's	99	0.05%
Cachexia	127	0.07%
Cancer	4,078	2.11%
Chronic Pain	170,383	87.98%
Crohn's Disease	627	0.32%
Glaucoma	1,119	0.58%
Hepatitis C	752	0.39%
HIV/AIDS	697	0.36%
Muscle Spasms	924	0.48%
Nausea	794	0.41%
Post-Traumatic Stress Disorder (PTSD)	2,363	1.22%
Sclerosis	30	0.02%
Seizures	1,221	0.63%
Two Or More Conditions	10,458	5.40%
TOTAL	193,672	100.00%

[¶]Unique debilitating conditions

Figure 2. Arizona Medical Marijuana Active Designated Caregiver Characteristics by Gender and Age (N = 802)

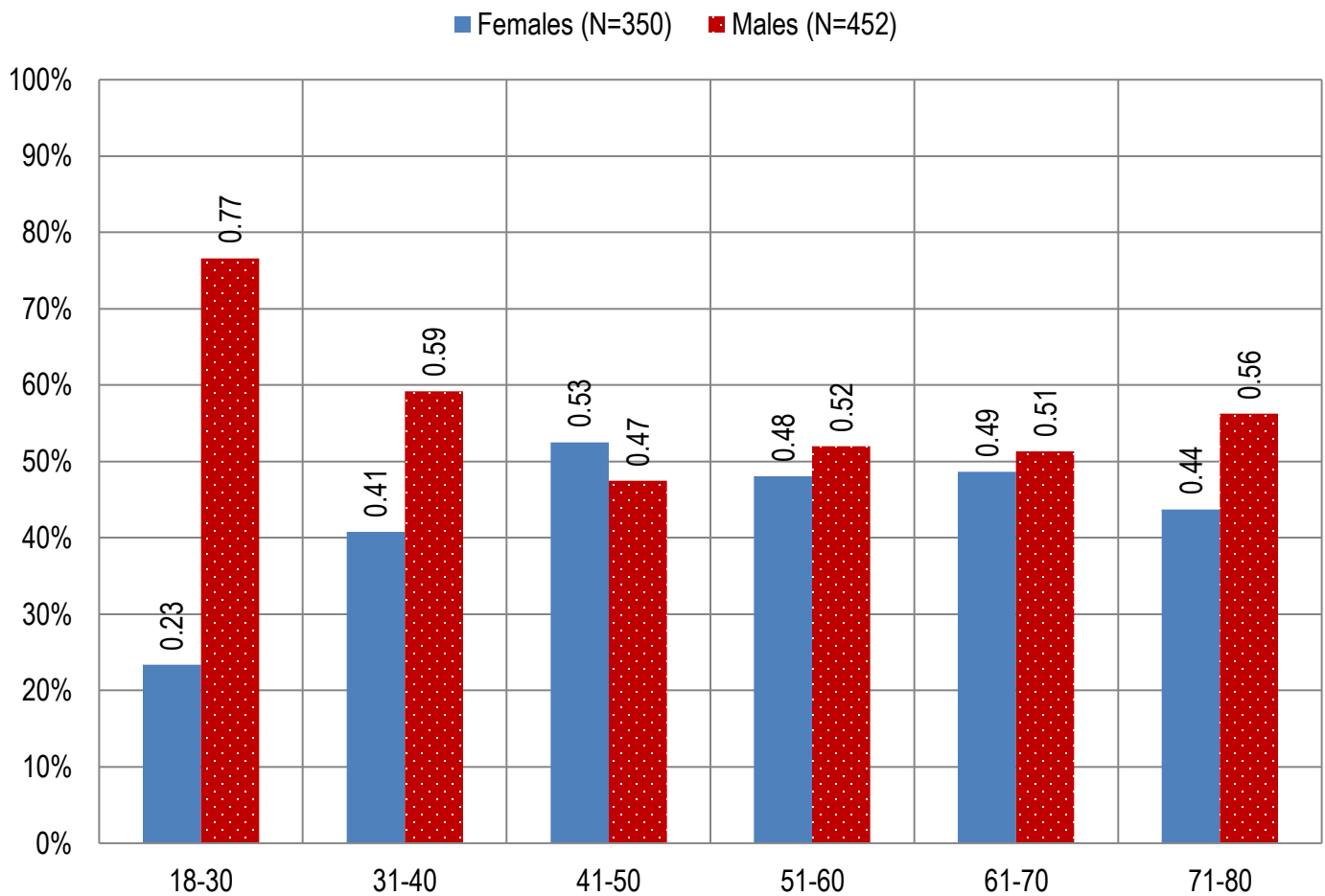


Table 5. Arizona Medical Marijuana Active Qualifying Patients and Designated Caregivers Authorized for Cultivation

Active cardholders cultivation status	Totals	Percent Total
Qualifying patients (n =193,672)	2,362	1.22%
Caregivers (n =802)	328	40.90%

Table 6. Frequency of Qualifying Patients, Caregivers, and Dispensary Agents by County of Residence

County	Qualifying Patients	Caregivers	Dispensary Agents*
Apache County	846	Count under 20	Count under 20
Cochise County	2,814	Count under 20	153
Coconino County	3,889	32	154
Gila County	1,793	Count under 20	33
Graham County	786	Count under 20	Count under 20
Greenlee County	200	Count under 20	Count under 20
La Paz County	343	Count under 20	Count under 20
Maricopa County	125,391	448	3,516
Mohave County	5,035	21	176
Navajo County	2,349	Count under 20	236
Pima County	26,831	147	603
Pinal County	11,538	38	213
Santa Cruz County	569	Count under 20	153
Yavapai County	9,652	52	367
Yuma County	1,636	Count under 20	Count under 20
TOTAL	193,672	802	5,705

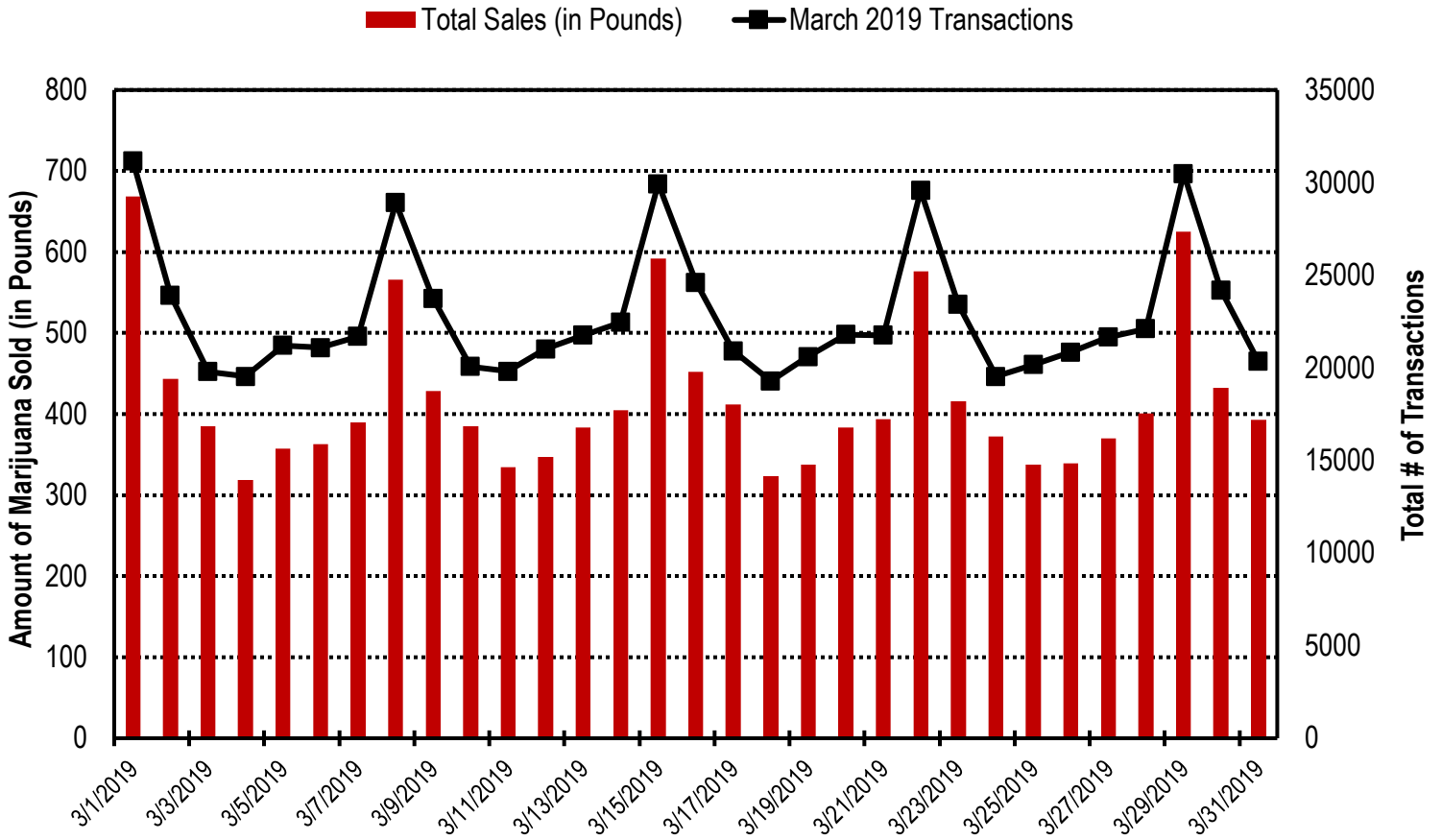
* 37 Dispensary Agents are located outside of Arizona.

Table 7. Type and Amount of Transactions at Medical Marijuana Dispensaries in March, 2019

Type of Transaction [†]	Ounces (oz.)	Pounds
Marijuana	186,788.69	11,674.29
Marijuana Edible	8,737.54	546.10
Marijuana Other	11,401.38	712.59
Total Marijuana Sold	206,927.61	12,932.98

[†]Amounts have been rounded and may not added to exact totals

Figure 4. Daily Transactions and Amount of Marijuana Sold in March, 2019



YEAR TO DATE

Table 1a. Arizona Medical Marijuana Applications Received- Application Profile

Applications Received Cardholder Profile	Totals	Percent Total
Qualifying patients (QPs)	60,678	95.55%
Caregivers (CGs)	404	0.64%
Dispensary Agents (DA)	2,420	3.81%
Total	63,502	100.00%

*Note: For caregivers and dispensary agents, these data reflect unique individuals, not the number of cards.

Table 1b. Arizona Medical Marijuana Licensed Qualifying Patients, Designated Caregivers and Dispensary Agents Profile

Applications Approved Cardholder Profile	Totals	Percent Total
Qualifying patients (QPs)	56,164	95.72%
Caregivers (CGs)	333	0.57%
Dispensary Agents (DA)	2,181	3.72%
Total	58,678	100.00%

*Note: For caregivers and dispensary agents, these data reflect unique individuals, not the number of cards.

Table 2. Arizona Medical Marijuana Licensed Qualifying Patient Profile

Applications Received for Qualifying Patients	Totals	Percent Total
New applications	31,251	55.64%
Renewal applications	22,112	39.37%
Changed demographics	1,118	1.99%
Added Caregivers	55	0.10%
Change Dup	1,614	2.87%
Replaced Caregivers	11	0.02%
Removed Caregivers	3	0.01%
Total	56,164	100.00%

Table 3a. Arizona Medical Marijuana Applications Received- Patient Characteristics

Characteristics of Applications Received who are Qualified Patients	Totals (N = 60,678)	Percent Total
Patient Age-groups		
Less than 18 years	49	0.08%
18 to 30 years	16,929	27.90%
31 to 40 years	13,365	22.03%
41 to 50 years	9,374	15.45%
51 to 60 years	8,941	14.74%
61 to 70 years	8,662	14.28%
71 to 80 years	2,845	4.69%
81 and older	513	0.85%
Patient Gender		
Male	35,965	59.27%
Female	24,713	40.73%

Table 3b. Arizona Medical Marijuana Licensed Qualifying Patient Characteristics

Characteristics of Approved Applications who are Qualified Patients	Totals (N = 56,164)	Percent Total
Patient Age-groups		
Less than 18 years	35	0.06%
18 to 30 years	15,670	27.90%
31 to 40 years	12,345	21.98%
41 to 50 years	8,684	15.46%
51 to 60 years	8,314	14.80%
61 to 70 years	8,011	14.26%
71 to 80 years	2,637	4.70%
81 and older	468	0.83%
Patient Gender		
Male	33,350	59.38%
Female	22,814	40.62%

Figure 1a. Arizona Medical Marijuana Applications Received- Patient Characteristics by Gender and Age

(N =60,678)

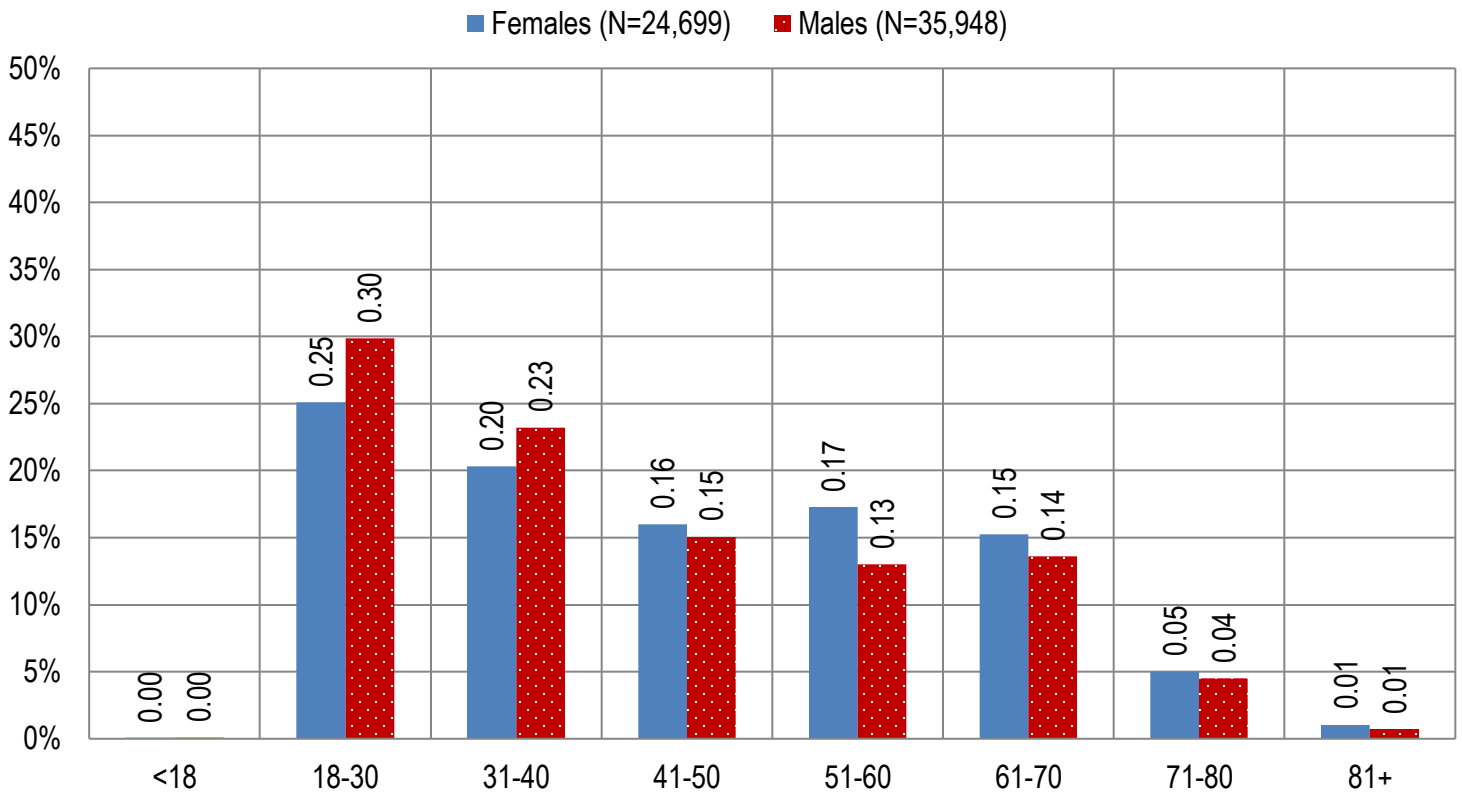


Figure 1b. Arizona Medical Marijuana Licensed Qualifying Patient Characteristics by Gender and Age

(N =56,164)

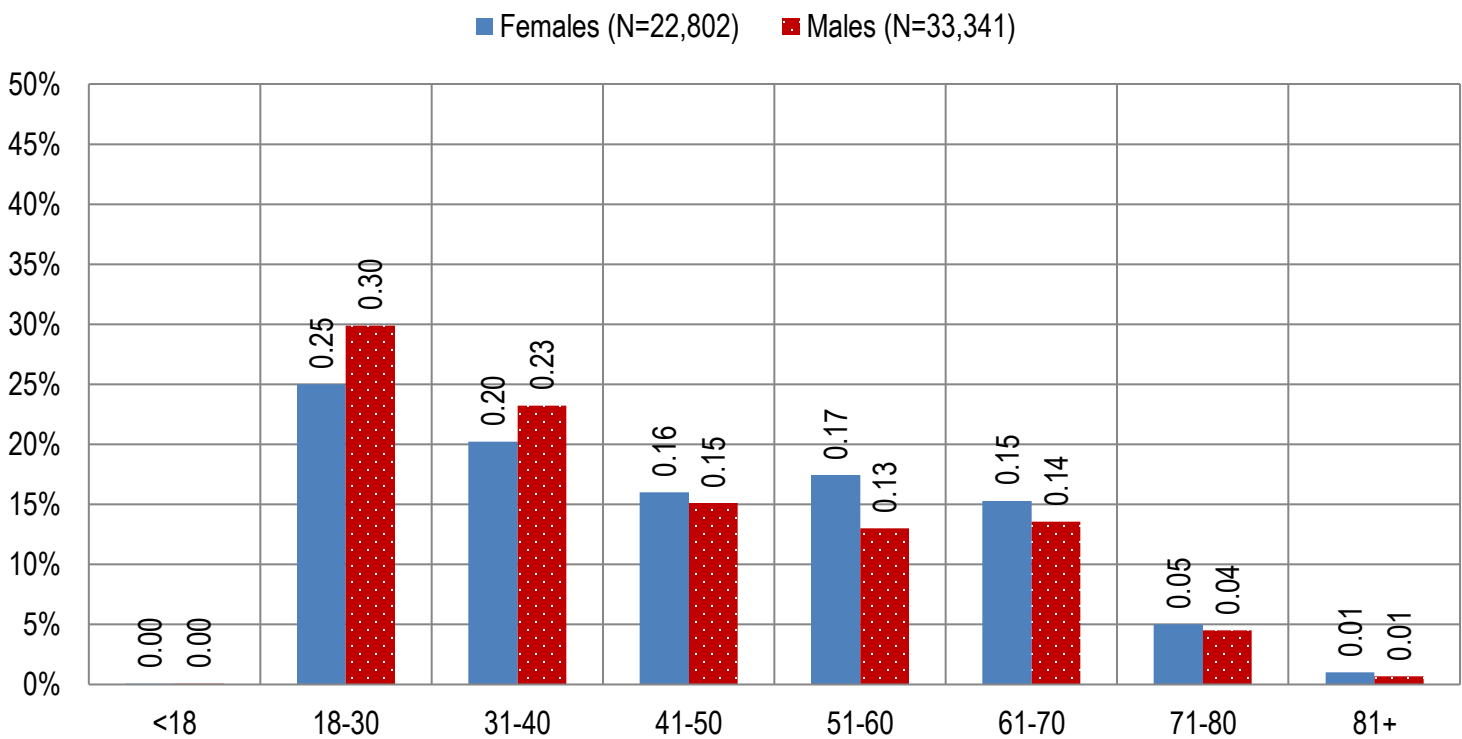


Figure 2a. Arizona Medical Marijuana Applications Received- Caregivers Characteristics by Gender and Age

(N = 404)

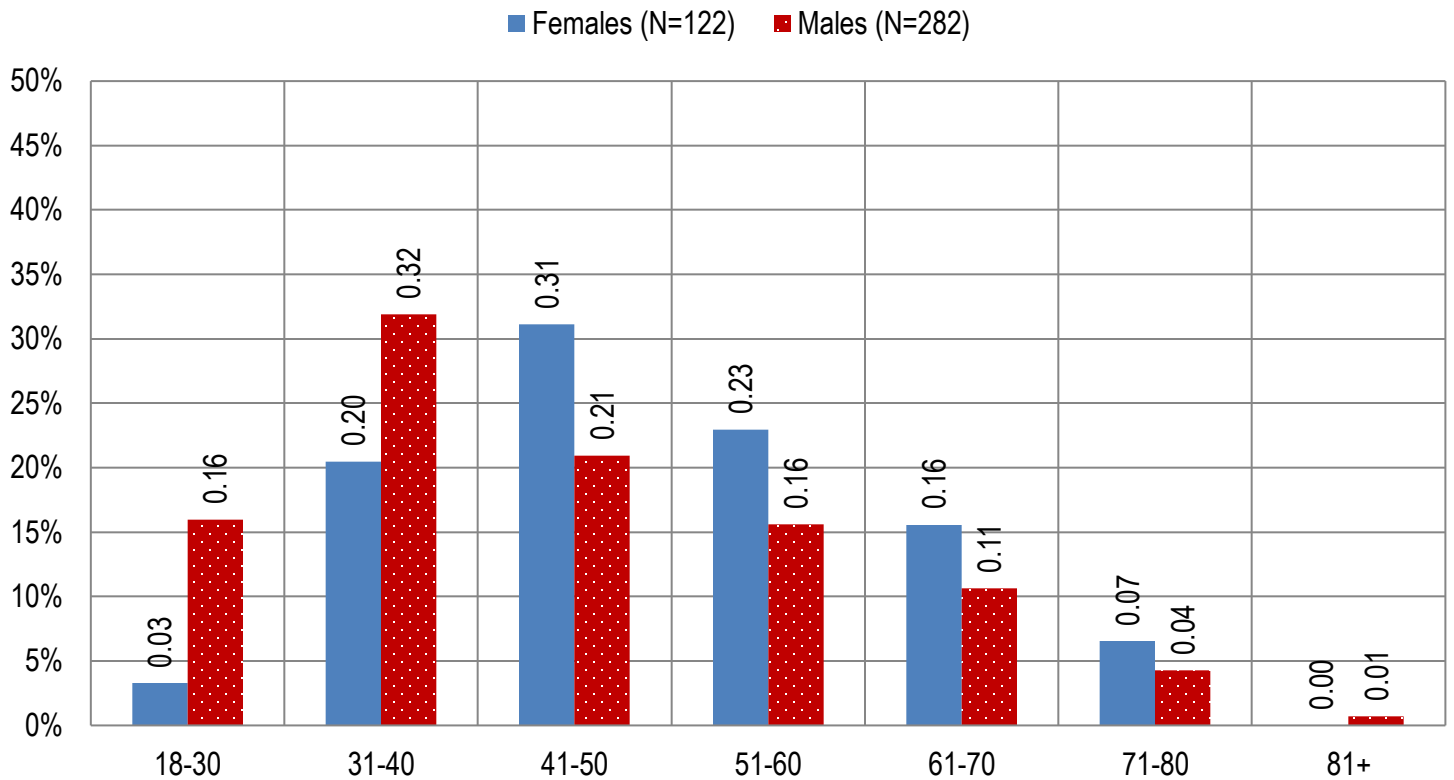


Figure 2b. Arizona Medical Marijuana Licensed Caregivers Characteristics by Gender and Age

(N = 333)

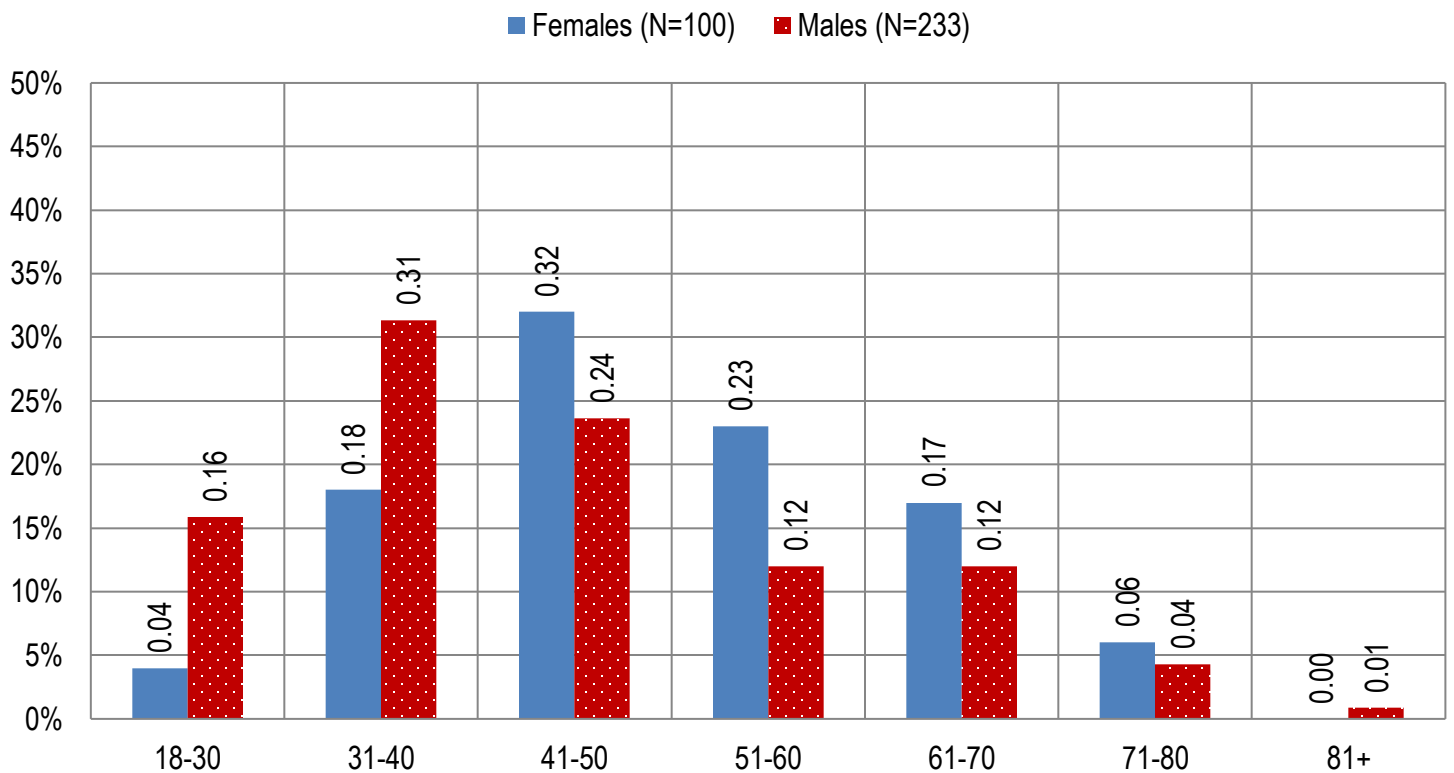


Table 4a. Arizona Medical Marijuana Applications Received- Patient Medical Conditions Profile

Patient medical condition profile of Applications Received [¶]	Totals	Percent Total
Alzheimer's	37	0.06%
Cachexia	31	0.05%
Cancer	1,065	1.76%
Chronic Pain	54,109	89.17%
Crohn's Disease	187	0.31%
Glaucoma	313	0.52%
Hepatitis C	242	0.40%
HIV/AIDS	210	0.35%
Muscle Spasms	279	0.46%
Nausea	231	0.38%
Post-Traumatic Stress Disorder (PTSD)	734	1.21%
Sclerosis	5	0.01%
Seizures	352	0.58%
Two Or More Conditions	2,883	4.75%
TOTAL	60,678	100.00%

[¶]Unique debilitating conditions

Table 4b. Arizona Medical Marijuana Licensed Qualifying Patients Medical Conditions Profile

Patient medical condition profile of Applications Approved [¶]	Totals	Percent Total
Alzheimer's	32	0.06%
Cachexia	29	0.05%
Cancer	974	1.73%
Chronic Pain	50,141	89.28%
Crohn's Disease	175	0.31%
Glaucoma	290	0.52%
Hepatitis C	225	0.40%
HIV/AIDS	196	0.35%
Muscle Spasms	254	0.45%
Nausea	218	0.39%
Post-Traumatic Stress Disorder (PTSD)	670	1.19%
Sclerosis	4	0.01%
Seizures	320	0.57%
Two Or More Conditions	2,636	4.69%
TOTAL	56,164	100.00%

[¶]Unique debilitating conditions

Table 5a. Arizona Medical Marijuana Applications Received for Applicants Seeking Authorization to Cultivate

Applications Received for cardholders with cultivation status	Totals	Percent total
Qualifying patients (n = 60,678)	564	0.93%

Table 5b. Arizona Medical Marijuana Licensed Qualifying Patients and Designated Caregivers Authorized for Cultivation

Approved cardholders cultivation status	Totals	Percent total
Qualifying patients (n = 56,164)	564	1.00%

Table 7a. Type and Amount of Transactions at Medical Marijuana Dispensaries in 2019 to Date

Type of Transaction [†]	Ounces (oz.)	Pounds
Marijuana	527,766.50	32,985.41
Marijuana Edible	23,579.45	1,473.72
Marijuana Other	29,369.36	1,835.58
Total Marijuana Sold	580,715.31	36,294.71

[†]Amounts have been rounded and may not added to exact totals

Figure 5. Transactions and Amount of Marijuana Sold in 2019 by Month

